

FZA

系列防水防尘防腐全塑主令电器



型号含义 Model implication

FZA-A□ B□ D□ K□

- 开关数(不配不注)
Switch number (No matching not noted)
- 指示灯数(不配不注)
Indicator lamp number (No matching not noted)
- 电表数(不配不注)
Meter number (No matching not noted)
- 按钮数(不配不注) Number of button
Button number (No matching not noted)
- 防水防尘防腐主令电器
water-proof dust-proof corrosion-proof
master electrical appliance

使用环境 Environmenr conditions

- 环境温度-25° C至+55° C;
 - 安装高度不超过海拔2000M;
 - 适用于强酸、强碱、盐、氨、氯离子腐蚀; 多水、多尘、潮湿等环境;
 - 广泛应用于石油、化工、码头、食品、制药、军工等工厂企业。
- Ambient temperature is-25° C to +55° C.
 - The height of installment can't over 2000 meters above sea level.
 - They can withstand the corrosion of strong acid, strong alkali, salt, ammonia, chlorine, and the environment of more water, more dust and humidity.
 - They are widely used in the lines of petroleum, chemistry, dock, food, medicine, war industry and so on.

产品特点 Features

- 壳体采用增强玻璃纤维不饱和聚酯树脂材料, 模压成形, 外形美观。具有抗老化、不变形、抗冲击、抗静电、耐腐蚀等优点。产品颜色为绿色;
- 本系列产品抗强酸、强碱、盐、海水、氯离子腐蚀、防腐等级为WF2;
- 本系列产品为迷宫式防水机构, 具有良好的防水、防尘性能, 防护等级为IP65;
- 所有外露紧固件采用不锈钢, 密封件采用硅橡胶, 耐油、耐酸、耐碱、耐高温、抗老化;
- 内装元件由公司定型;
- 内装元件主要有: 万能转换开关、按钮、电流表、指示灯等;
- 本系列产品的进出线方向为下进下出、电缆布线, 挂式安装;
- 产品出厂铭牌上只体现总单元内容, 各分单元代号为订货参数。

FZA

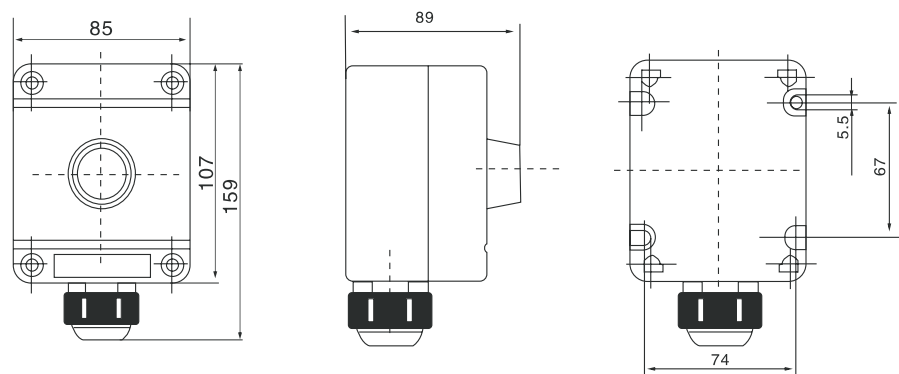
Type water-proof dust-proof corrosion-proof full-plastic master controller

- The cases adopt strong glass-fibre, and unsaturated, polyester resin, and are moldable, with light structure and beautiful appearance, they have good advantages of aging resistance, shape resistance, high impact, anti-static and anti-corrosion, etc, the product's colour is green.
- The products treatment of ammonia, chlorine, resin. Can withstand the corrosion of acid, alkali salt ammonia, chlorine. The anti-corrosion grade is WF2
- This series product adopts curve-sealing water-proof, they have performance of water-proof and dust-proof, the protection grade reaches IP65.
- All the leakage fixers adopt stainless steel, sealers adopt silicon rubber, they can withstand oil, acid, high temperature and are not easy to age.
- The elements used in installing inside, which are decided by our company
- The inside installment elements are mainly shift switches, buttons, current meters and indicator.
- In-Out wires of the products of the series go under-in, installment with cable, pendant type.
- the factory brand of the products manifest the content of the whole unit, code is ordering parameter.

技术参数 Technical parameters

使用类别 Using sort	额定电压(V) Rated voltage	额定电流(A) Rated current	防护等级 Protection grade	防腐等级 Corrosion-proof grade	电缆规格 (Φ, mm) Cable's spec	进线口规格(G') Pole's spec.
AC-3 AC-4	AC380/220V	10A	IP65	WF2	9~14	3/4

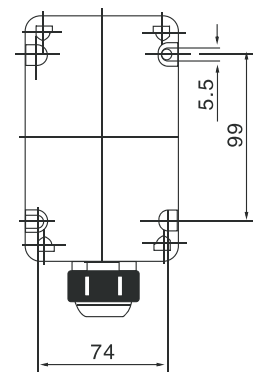
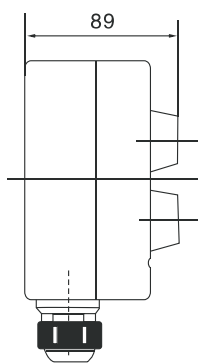
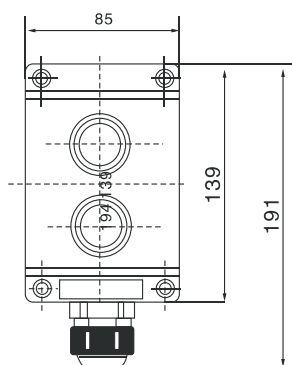
外形及安装举例 Outline and mounting example



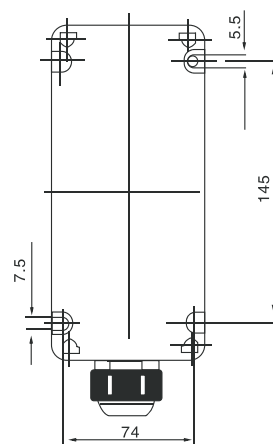
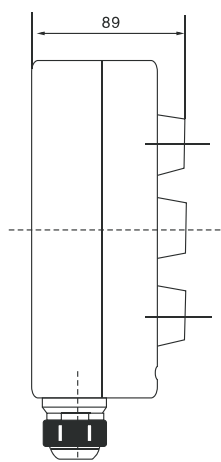
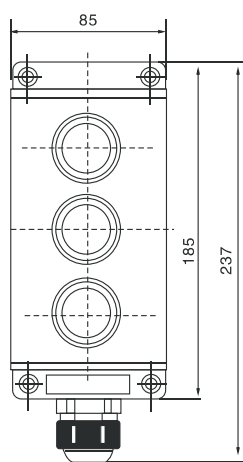
FZA-B1

FZA

系列防水防尘防腐全塑主令电器



FZA-B2



FZA-B3